

Shadnagar municipality approved layout



0648/HMDA/SWDL/2025



P02400010214

# Satellite

COUNTY

Shadnagar Municipality | Bangalore Highway | Residential Zone

City Ready Plots with Countryside Peace





## About Sri Krishna Developers

---

For over 10 years, we have not just built layouts; we have created investment opportunities. Sri Krishna Developers selects land in high potential corridors so life keeps improving around our projects with schools, hospitals, supermarkets, malls, transit and IT hubs. We offer open plots backed by rigorous due diligence, clear processes and end to end support from enquiry to registration.

A decade ago, when real estate was broker driven and oversight was weak, we chose truth and fairness by conviction, not compulsion. We ran transparent paperwork and accommodative service long before the rules demanded it. The framework is stronger today, and our standard is unchanged: ethics first, knowledge applied, accountability delivered. With SKD, you secure your opportunity with confidence.

### Sri Krishna Developer's Guarantees

- ✦ Easy Entry Prices & Continuous Appreciation
- ✦ Easy Buying Process & Timely Delivery
- ✦ Uncompromised Construction Quality
- ✦ All Approvals, Lifelong Peace of Mind





## Project Overview

---

Satellite County is a city-address plotted community inside Shadnagar Municipality, in the R1 HMDA residential zone, offered at an easy entry price with strong investment potential. The project is HMDA Approved with municipal proceedings and is RERA registered. It blends value, connectivity and confidence in paperwork; making it a smart buy today and a calm place to build your home.

### Ready for Everyday Living

As per approved plans, the layout provides blacktop internal roads, street lighting, storm-water drains, water supply with OHT and sumps, underground utility ducting, avenue plantation, park space, children's play and fitness pockets. The design is guided by 60 luxury features across light, breeze, materials, rain-wise detailing, planting, streets and wayfinding, play and fitness, lighting, and a welcoming entry identity—quiet details that add up to everyday comfort and long-term value.



Twilight Meadows



Twilight Meadows is the calm heart of Satellite County. Designed around **Light, Shade & Orientation** and **Breeze, Heat & Comfort**, it layers shade, breeze and color for daily ease. A fountain, pergola, gazebo and pebble paths frame slow walks. Modern lights and benches shape safe evenings and photo perfect mornings.



### Entry Arch

Flowered entry arch frames a welcome view. Timber texture catches the late sun. Low planting at the base makes the structure float.



### Modern Lights

Sleek bollards with shielded heads guide without glare. Warm 2700K to 3000K LEDs flatter faces and greens. Modern lines match the paving.



### Benches

Concrete and wood benches are placed on breeze lines. Comfortable height and back support aid seniors. Views face planting highlights and fountain.



### Gazebo

Lattice sided gazebo with wraparound bench offers filtered views and morning shade. A breezy pause point for reading, calls and supervision.



### Fountain

Tiered fountain sets a calm soundscape and photo focus. A decorative water feature with safe edges and easy maintenance access.



### Pergola

Timber pergola with flowering climbers casts moving shadows. A cinematic setting often seen in Indian romantic cinema scenes. Filtered shade keeps afternoons comfortable.



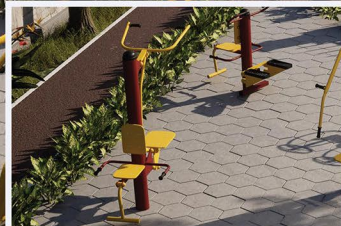
### Pebble Pathway

Meandering pebble pathway links arch, pergola and gazebo. Bands of flatter stones improve footing. Gentle camber drains rain so hems stay clean.



### Exotic Plants

Climate adapted exotic plants add drama with bird of paradise, agapanthus and blue thunbergia. Native shade trees balance color and keep the garden lush.



## Open Air Gym

Satellite County's open air gym brings everyday fitness outdoors. All equipments are non powered and uses your body weight for resistance, so workouts feel natural and maintenance stays simple. Planned for light, shade and orientation, and for breeze, heat and comfort, sessions stay cooler. Non slip hex pavers provide stable footing, planting buffers define safe edges, and clear circulation makes sharing easy. Warm, glare free lights extend comfortable use into early mornings and evenings.

## Sunrise Yoga Lawn

Sunrise Yoga Lawn is an open air practice space shaped for calm and focus. Orientation welcomes soft morning light with shade building as the day warms. Planting buffers hush the edges while a level, barefoot friendly turf supports balance work. Breeze paths temper heat so holds feel easier. Ideal for solo sessions or small groups, with quick links to the jogging loop and gazebo for warmups and cool downs.



## TwinServe Court

TwinServe Court is our flexible multi court for real play. An adjustable center net switches easily between volleyball and badminton. The surface is professional grade with rubberised flooring and regulation markings for clean bounce and footing. Two viewer zones with comfortable seats face the action, set behind planting for a calm edge. Light, shade and orientation are planned for cooler sessions. A low wall with grill bars defines the court and keeps play contained with clear visibility.





## Starlight Kids Park

Orbit Kids Park brings classic play together in one safe, visible zone. Slides, swings, jungle gym and a merry go round sit on a deep sand base using specially sourced soft sand for cushioning. Parents watch from shaded seating with clear sightlines across the park. Equipment is placed for morning shade and open breeze so it stays cooler. A two foot wall with grill bars surrounds the area, guiding entries and keeping toys and balls inside.

## Raised Boundary

Clean kerbs separate plots and protect edges.



## Your Plot, Ready From Day One

Every plot is neatly bounded with low kerbs and planting pockets. Flowering shrubs at the perimeter soften edges and create a cared-for look. A special weed-suppressing gravel keeps the surface clean. Recessed markers and provisioned utility corridors make future building simple. Peace of mind today, flexibility tomorrow.



### Flowering Perimeter

Flowering shrubs on boundaries add color and vibrance.



### Weed-Safe Surface

Special gravel keeps plots tidy and low maintenance.



### Sun Smart Orientation

East to west rows catch soft morning light.



### Footpath Plantation

Specially built raised enclosures on footpaths near every plot for planting trees





### Modern Lamp Posts

Shielded LED heads light paths, keeping eyes and sky comfortable.



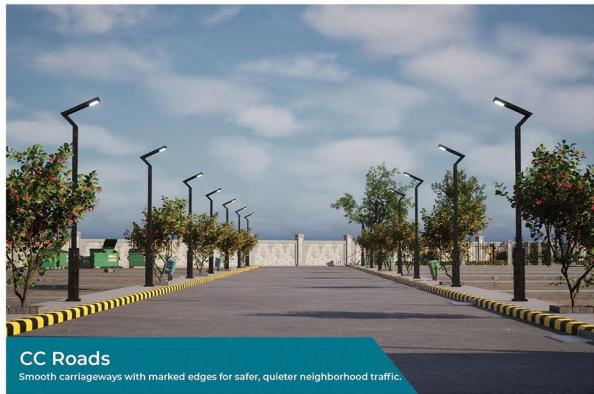
### Avenue Plantation

Tree-lined avenues shape shade, cooler walks, and photo-friendly streets.



### Storm/Rainwater Drains

Stainless inlets and grates clear rain quickly, keep edges tidy.



### CC Roads

Smooth carriageways with marked edges for safer, quieter neighborhood traffic.

# Designed for Daily Ease

Every choice in the master layout serves a simple goal: smoother comfort. Walks feel cooler, crossings read clearly, and nights are safe on day one and keeps life easy year after year.



### Barricaded Transformer Area

Fenced exclusion zone for safety, maintenance access, and quiet operations.



### 360° Flood Lights

Multi-head mast illuminates play evenly for safe evening activities outdoors.



### Underground Power Cables

Utilities run below ground, fewer poles, cleaner views, safer streets.



### Signature Stone-Clad Boundary

Stone-clad patterned walls give elegance, privacy, and lasting assurance.

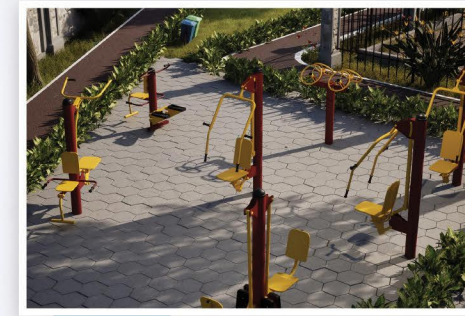
days. We sized, placed and detailed each amenity around human routines, light, shade and orientation, and breeze, heat and safely lit without glare. Rain runs off, edges stay tidy, and services work quietly out of sight. The result is a layout that looks good



Twilight Meadows (Open Space)



Onsite Office (Social Infra)



Open Air Gym



TwinServe Court



Orbit Kids Park



Main Entry Arch



Entry Arch

# Overview

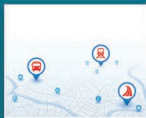
**Project Area** : 4 Acers  
**No. of Plots** : 64  
**Roads** : 30'-0" Wide Road & Proposed 100'-0" Masterplan Road

- 166.6 Sq yds (50 ft x 30 ft)
- 166.6 Sq yds (50 ft x 30 ft)
- 257 Sq yds to 285 Sq yds
- 202.3 Sq yds to 301.4 Sq yds
- Mortgage Plots





# your doorstep



## Connectivity

- ↗ Bangalore Highway \_\_\_\_\_ 8 mins 📍
- ↗ Shadnagar Railway Station \_\_\_\_\_ 7 mins 📍
- ↗ Shadnagar Bus Station \_\_\_\_\_ 5 mins 📍



## Banks

- ↗ Kotak Mahindra Bank \_\_\_\_\_ 5 mins 📍
- ↗ IDBI Bank \_\_\_\_\_ 8 mins 📍



## Cinemas

- ↗ Ramakrishna Cinema 3D \_\_\_\_\_ 7 mins 📍



## Grocery Stores

- ↗ Vishal Mega Mart \_\_\_\_\_ 9 mins 📍
- ↗ More \_\_\_\_\_ 5 mins 📍



## Hospitals

- ↗ ABV Hospitals \_\_\_\_\_ 4 mins 📍
- ↗ Viva Hospitals \_\_\_\_\_ 6 mins 📍



## Schools

- ↗ Delhi World School \_\_\_\_\_ 7 mins 📍
- ↗ Brilliant Grammar High Schools \_\_\_\_\_ 6 mins 📍



## Branded Showrooms

- ↗ Bajaj Electronics \_\_\_\_\_ 5 mins 📍
- ↗ Jockey & Bata \_\_\_\_\_ 5 mins 📍
- ↗ Reliance trends \_\_\_\_\_ 5 mins 📍



## Fashion Stores

- ↗ Chandana Brothers \_\_\_\_\_ 7 mins 📍
- ↗ CMR Shopping Mall \_\_\_\_\_ 8 mins 📍



## EV & Industrial IT

- ↗ Microsoft Data center \_\_\_\_\_ 5 mins 📍
- ↗ Amazon Data center (AWS) \_\_\_\_\_ 15 mins 📍
- ↗ Olectra Greentech \_\_\_\_\_ 15 mins 📍

# Surrounding Investment



Rajiv Gandhi International  
Airport



Shadnagar Railway Junction



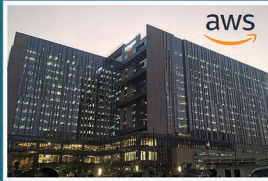
Shadnagar Bus stand



MSN Lab



Microsoft Data Center



Amazon Data Center



Oelectra Greentech (EV Factory)



SIBM Hyderabad



National Remote Sensing Centre  
(ISRO)



Johnson & Johnson



LV Prasad Eye Hospital



Statue of Equality

# Sri Krishna

DEVELOPERS



Indralok Pride, Prashant Hills, Khajaguda, Gachibowli,  
Hyderabad, Telangana 500104



**Site Office:**  
Inside project premises, Shadnagar

SCAN QR for Location

